

MOTOR YACHT **LA PELLEGRINA 1**



COUACH **164'**

THE YACHT



In 2024, she underwent an extensive refit, enhancing her luxurious features, performance, and overall allure, ensuring she remains at the pinnacle of modern yachting.

With her striking design and exceptional craftsmanship, she is a true symbol of luxury and sophistication. The open-plan main saloon, flooded with natural light from full-height windows, offers an elegant seating area and a refined dining space separated by a sleek island credenza.

The main deck hosts a distinguished VIP suite with 180-degree panoramic views, while the full-beam Master Suite on the upper deck includes a private aft deck with U-shaped seating - perfect for relaxation or entertaining. In total, La Pellegrina 1 accommodates up to 12 guests in six luxurious cabins, including four guest suites on the lower deck (three with queen beds, one with twins).

Her exterior spaces are expansive and spread across three decks. The sundeck offers sunbeds, a spa jacuzzi, a dining table, and a wet bar for alfresco dining, while the large swimming platform provides easy access to the sea for relaxation & water activities.

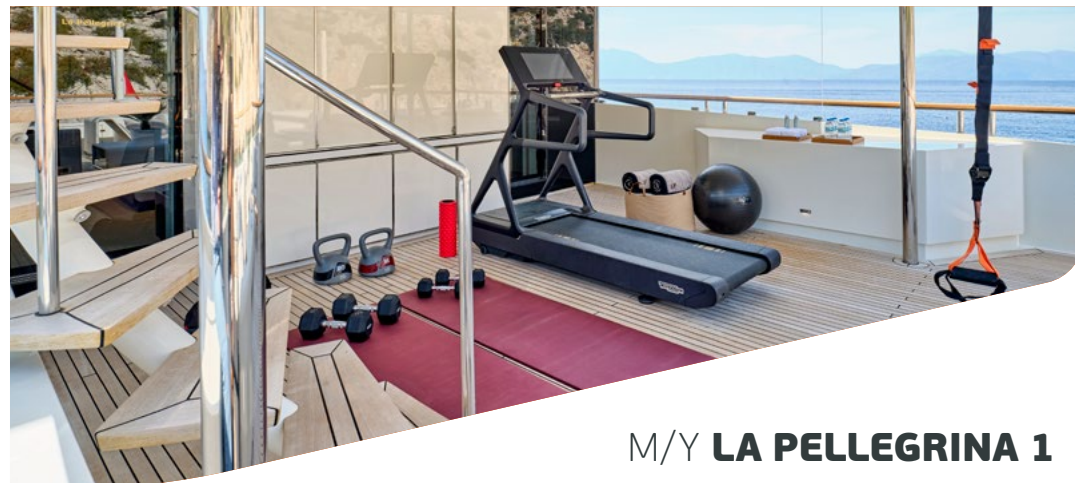


M/Y **LA PELLEGRINA 1**

KEY FEATURES

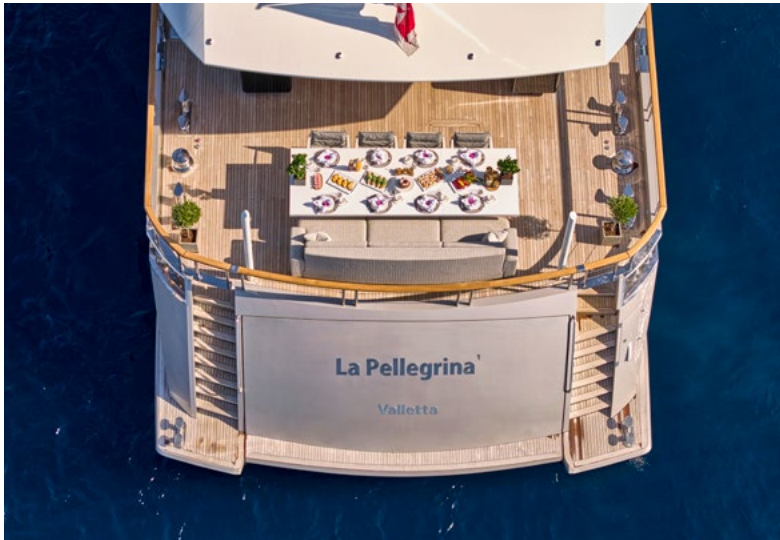


FULL ENGINE REBUILD COMPLETED IN 2025 / OPTIMIZED FOR EFFICIENCY, OFFERING FLEXIBLE CRUISING SPEEDS TAILORED TO GUEST PREFERENCES / OUTSTANDING CREW WITH YEARS OF EXPERTISE AND EXCEPTIONAL SERVICE / MODERN, LIGHT INTERIORS COMPLEMENTED BY EXPANSIVE FLOOR-TO-CEILING WINDOWS IN THE MAIN SALO / LUXURIOUS MASTER SUITE ON THE BRIDGE DECK WITH ITS OWN PRIVATE TERRACE AND FITNESS AMENITIES / BALANCE FITNESS AND RELAXATION WITH OUR ONBOARD GYM AND INVITING DECK JACUZZI / MAIN DECK VIP SUITE OFFERING EXPANSIVE 180 DEGREE PANORAMIC VIEWS / AN UNPARALLELED VARIETY OF AQUATIC TOYS & GEAR / STABILIZERS UNDERWAY & AT ANCHOR



M/Y **LA PELLEGRINA 1**

AFT DECK



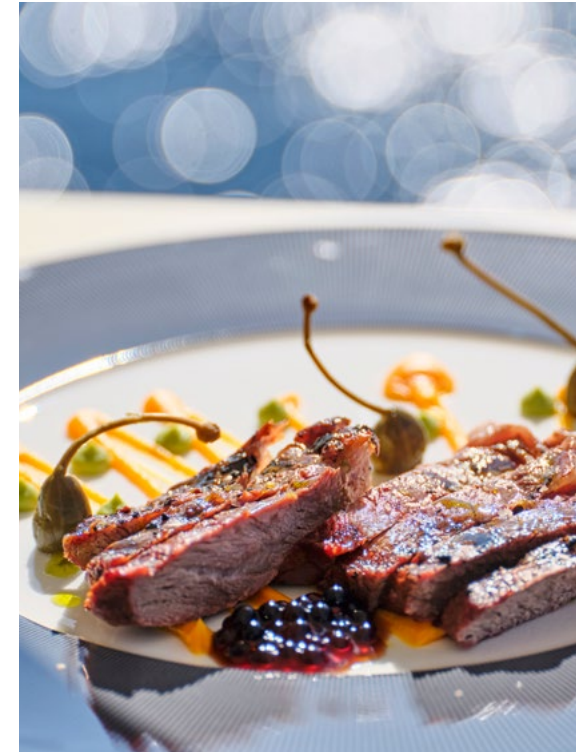
M/Y **LA PELLEGRINA 1**

SALOON & DINING AREA



M/Y **LA PELLEGRINA 1**

SALOON & DINING AREA



M/Y **LA PELLEGRINA 1**



M/Y **LA PELLEGRINA 1**



M/Y **LA PELLEGRINA 1**

STATEROOMS



M/Y **LA PELLEGRINA 1**

STATEROOMS



M/Y **LA PELLEGRINA 1**

FLYBRIDGE



M/Y **LA PELLEGRINA 1**

LIFESTYLE



M/Y **LA PELLEGRINA 1**

BOW SUNDECK



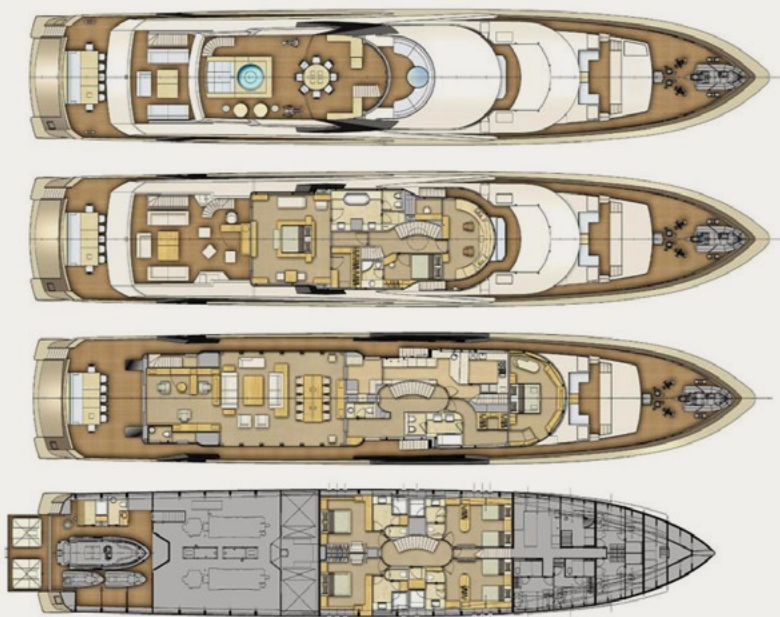
M/Y **LA PELLEGRINA 1**

WATERTOYS



M/Y LA PELLEGRINA 1

SPECIFICATIONS



Builder/Type:	Couach 164'
Built/Refit:	2012 / 2024
L.O.A:	50,00m / 164,10ft
Beam:	9,30m / 30,60ft
Draft:	2,50m / 8,20ft
Main Engines:	2x 5240hp MTU
Generators:	2x 125kw Kohler
Cruising speed:	16knots
Maximum speed:	28knots
Fuel Consumption:	620lt/hr

Accommodation: 12 Guests in 1 Master Suite, 1 VIP, 3 Double and 1 Twin Cabin all with ensuite facilities.

Crew consisting of 11: Captain, Chief Officer, Second Officer, Chef, Chief Engineer, Second Engineer, Chief Stewardess, Second Stewardess, Third Stewardess, Stewardess, Deckhand.

General amenities: Stabilizers both underway and at anchor, Air conditioning, Deck Jacuzzi, Approved RYA water sports centre, Starlink - Wifi connection, Gym/exercise equipment, Satellite TV, BBQ & Beach Set up.

Tender & Toys: Tender 18' (6m) Novurania Equator EQR 600, Crew Tender 3,40m inflatable 25hp Yamaha, 2x Seadoo Spark 90Cv (2020), 2x Knee Boards, 2x Wakeboards, 3x Water skis (adults & children), 2x F5S Seabob, 2x 10ft Jobe Sups, 3-seat Jobe Banana, 1 Inflatable 2 seat sofa, Fishing Equipment, 2x Jobe Infinity Seascooters, 1 Jobe 2-seat Towable Tube, 1 Efoil, 2-seat Canoe Kayak, Extension inflatable deck, Waterslide (upon request), Any other water toys can be upon request

M/Y **LA PELLEGRINA 1**